



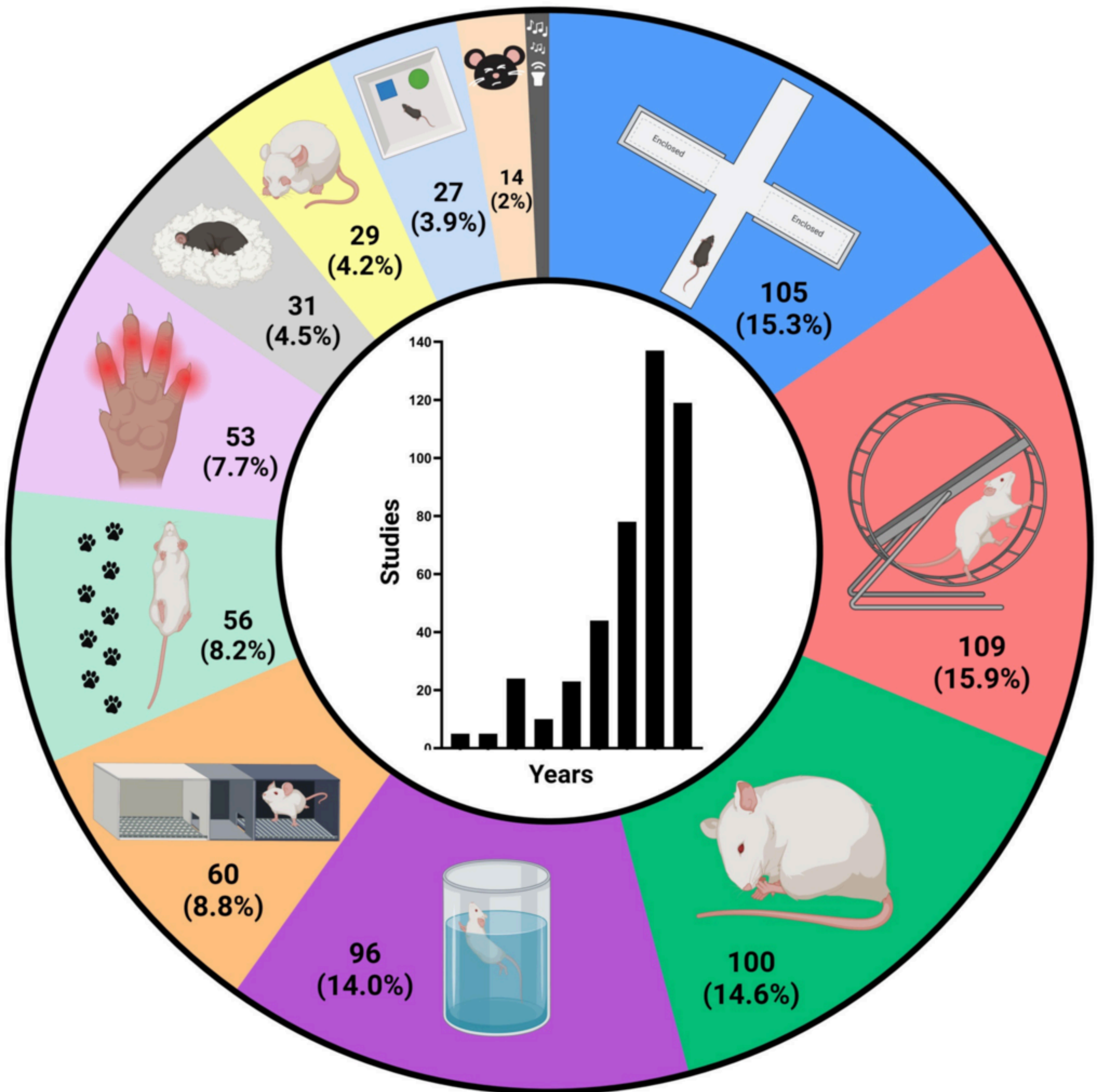
Strategies for measuring non-evoked pain in animal models of neuropathic pain: a systematic review



Miguel Á. Huerta¹, Elsa Cisneros², Matilde Alique³ and Carolina Roza³

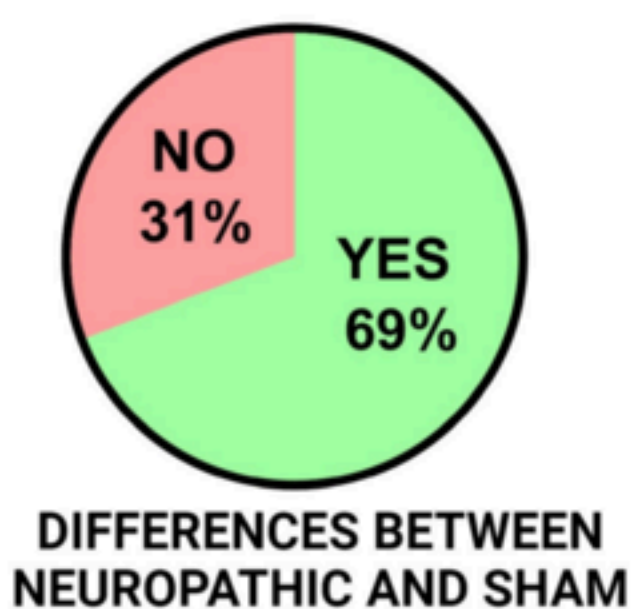
¹Department of Pharmacology, University of Granada. ²Facultad de Ciencias de la Salud. Universidad Internacional de La Rioja (UNIR).

³Biología de Sistemas. Universidad de Alcalá



■ Anxiety
 ■ Exploration
 ■ Paw lifting
 ■ Depression
 ■ Place preference
■ Gait
 ■ Autotomy
 ■ General wellbeing
 ■ Facial grooming
 ■ Cognitive impairment

CONCLUSIONS



- There is a large variety of tests (> 45) for measuring NEP in experimental models of neuropathic pain, and its use has increased exponentially in the last decade.
- Still a proportion of tests were unable to detect differences between sham and neuropathic groups.
- Most studies did not evaluate the reversion of NEP-related behaviors with standard analgesics.